

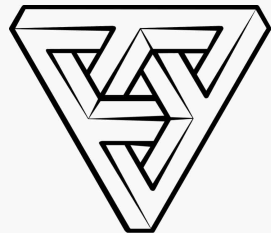


Innovative and
Versatile Method
of Work Positioning

VERTEX ROPE ACCESS

ROPE ACCESS
INDUSTRIAL SERVICES

DIFFICULT
TO REACH
LOCATIONS



VERTEX

VERTEX ROPE ACCESS INDUSTRIAL SERVICES

Vertex provides Rope Access services as an innovative and versatile method of work positioning, which allows for safe and efficient access to difficult-to-reach locations within industrial, marine, and offshore settings. By utilizing specialized rope techniques, our skilled technicians can perform a variety of critical tasks without the need for traditional access methods such as scaffolding or cranes, which can be costly, inflexible, and labor-intensive.

This approach not only enhances safety and operational flexibility but also provides significant cost savings, contributing to increased efficiency and profitability.

ROPE ACCESS IS SAFE

Because all the work is done by Rope Access Technicians with international working at height certificates, no unskilled workers are used. In this way, the principle of zero work accident is preserved, projects are not left unfinished.

ROPE ACCESS IS FAST

Because the safety lines to be established and the safety measures to be taken for jobs in hard-to-reach and dangerous areas are included in the basic training of Rope Access Technicians, and they start work without the need for a second team.

WHY ROPE ? ACCESS !

ROPE ACCESS IS HIGH QUALITY

Because Rope Access Technicians, who have full knowledge of the work at height safety equipment and have no problem with the feeling of being at height, are highly educated people who follow the sectoral developments and research the intricacies of the job; They don't rush things.

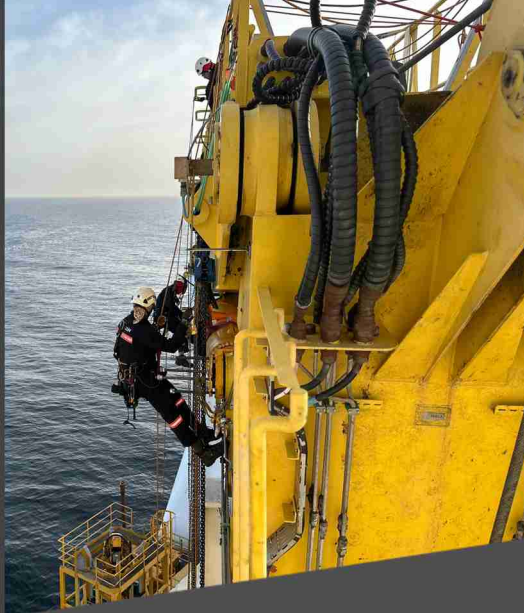
ROPE ACCESS IS ECONOMICAL

Because it does not require access to the pre-work area, ground preparation, installation, post-work dismantling and evacuation, as in conventional crane and scaffolding methods used for working at height. During work, it does not interfere with the work of other teams as it does not take up space on the floor.

OFFSHORE OIL & GAS

OUR SERVICES

IRATA began its life by providing teams to inspect, maintain, repair and renovate the offshore platform. This was in answer to the companies operating these rigs who had found other means of access to be of limited use in the offshore environment, with their structures and machinery taking up too much of the limited space available; and at times prejudicing the whole safety regime of the rig, including emergency evacuation.



It was not long before the international oil and gas companies came to insist on rope access systems being employed whenever it was in need of use on their platforms.

Discovering that workers on ropes were able to reach areas of the platform that it was impossible or, at best, very costly to get to by other access means, owners of these installations turned to rope access technicians for ever more detailed and specialist work. Some of these tasks have involved ground-breaking procedures that have either substantially reduced the time required for the work to be completed, extended the life of the rig, or its parts, or enabled rigs to be altered or repaired without returning to shallow water.

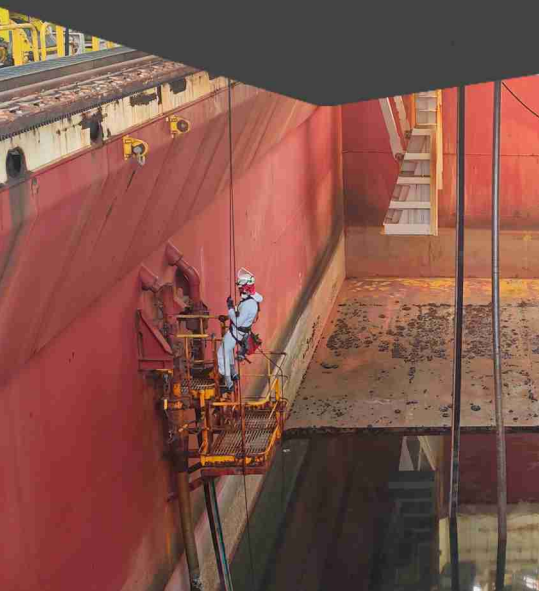
Many offshore rope access technicians have specialist work-related qualifications relevant to inspection and maintenance.

SHIPPING & HARBOURS

OUR SERVICES

Harbours are often where large construction projects are undertaken to support the offshore sector and rope access is widely used for works on derricks and similar creations. Rope access can often be seen in use on large ships whilst they are in harbour.

Painting and inspection work can be carried out above the water line whilst the vessel is in port and even between tides if this is a factor. Additionally, the inspection and repair of deep locks can also be undertaken in short time, thus minimizing the time such a facility is out of commission.



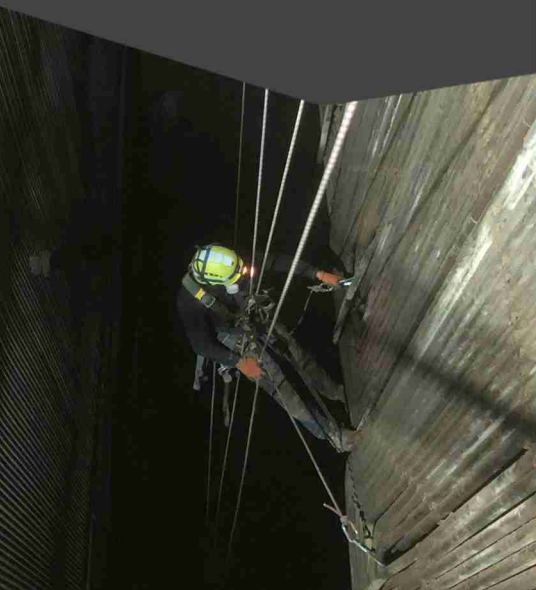
Industrial rope access is at home on unusual structures and can achieve set-up and dismantling times that no other means of access can rival. It is for these reasons that rope access companies can often be found undertaking inspection and maintenance work in the great ports of the world where an access structure, that prevents use of a crane or similar equipment, can be very obstructive and disruptive.

Because of its swift set-up and dismantle times, work can often be undertaken by rope access means in a time scale that avoids any disruption to the normal work carried out at the worksite.

POWER & PETROCHEMICAL

OUR SERVICES

Work undertaken can range from basic inspection and minor repair to substantial maintenance and even removal and replacement of structure or equipment. There is also a role for rope access when ageing buildings need to be renovated, decommissioned or dismantled.



THE BUILD ENVIRONMENT

OUR SERVICES

Modern structural designs are becoming more extravagant and, of course, constructing to great height is increasingly common. All this is of little concern to an efficient rope access team who can move around the most complex of structures by means of their ropes alone and can either carry the necessary tools with them or use another rope system to deliver them to the required position.

There are occasions where one particular part of a major structure is impossible to reach by the method being used for the other parts. In such cases, the need to devise a major additional means of access can be prevented by the introduction of rope access.



Because of its non-mechanical operation, its ability to reach and operate within confined spaces, its minimal impact on the surrounding area and its ability to adapt to the limited availability of some work sites, rope access offers unique benefits to the Civil Engineer. Designs and structures of the past were seldom built with repair and maintenance in mind and are thus often inconveniently sited or designed for current works to be carried out.

Today, the application of Industrial rope access can be seen in most major cities, large towns or industrial complexes around the world. There are many reasons for the growth in the use of rope access in these locations but chief amongst them is the much heralded 'small environmental footprint' that the rope access system of access delivers.

THE NATURAL ENVIRONMENT

OUR SERVICES

Rope Access companies have worked on many large-scale sites in several continents where the stabilisation work undertaken has preserved cherished historic views, maintained roadways and even kept substantial land masses from being lost forever.



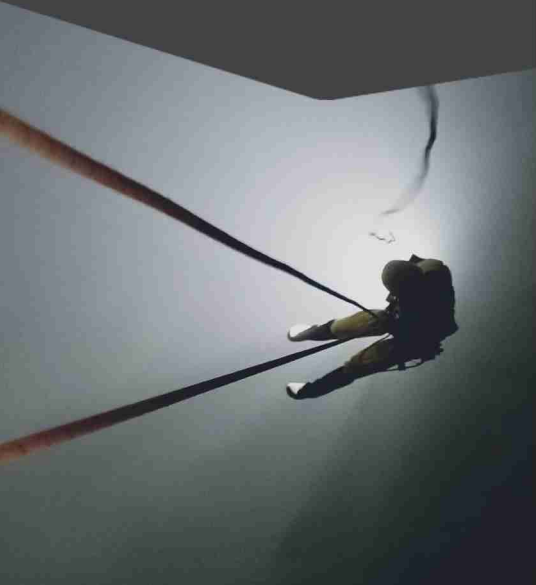
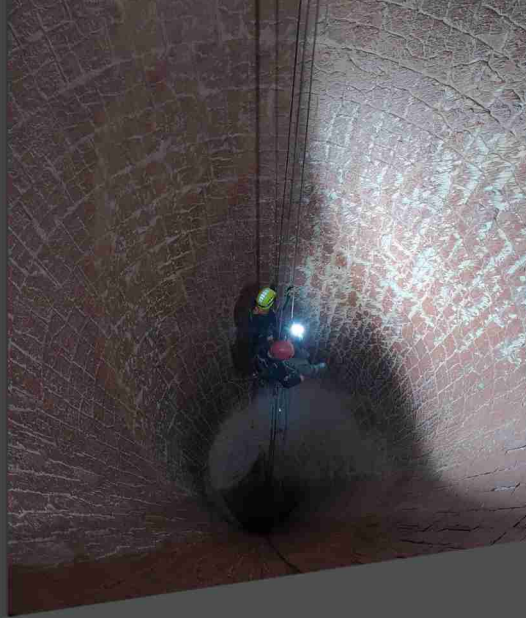
The sports and tourist industry, which is sometimes more ready than other industries to support rope access methodology, have benefited significantly from their willingness to explore rope access solutions.

Long established road and rail embankments works are seldom completed without the use of rope access. Clearing rock for road widening is often a task attributed to rope access teams.

CONFINED SPACES

OUR SERVICES

Industrial rope access provides a safe, efficient and effective method of access for confined space entry and egress where required. The techniques used by our operator members within this sector requires that they complete strict and essential safety procedures prior to entry into such spaces.



Our technicians work in a variety of confined space environments, both onshore and offshore, such as silos, storage tanks, access shafts, chambers and pipes. The need to access confined spaces is required for a variety of tasks including inspection, maintenance, repair and cleaning.

RENEWABLE ENERGY

OUR SERVICES

The current global demand for clean energy has resulted in rapid growth in the renewable energy sector. Coupled with this drive is the increase of wind turbines that are often situated in remote locations, predominately inaccessible to other access methods. Industrial rope access offers a safe, cost effective and flexible access method to enable regular maintenance and repair tasks for these structures.



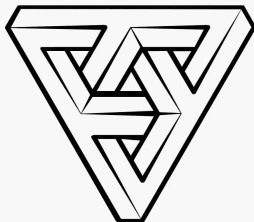


Innovative and
Versatile Method
of Work Positioning

VERTEX ROPE ACCESS

ROPE ACCESS
INDUSTRIAL SERVICES

**DIFFICULT
TO REACH
LOCATIONS**



VERTEX

Contact:

info@vertex-ra.com

www.vertex-ra.com

-905416272667